



Wireless Touchpad Keyboard



Model: WKB-4200UB

QuickGuide

English

www.adesso.com

①

LIMITED WARRANTY

ADESSO provides one year limited warranty for the quality of all its products in materials and workmanship.

During this period, ADESSO will repair or replace all merchandise, which proved to be defective. However, ADESSO will not warranty any product which has been subjected to improper freight Handling, shipping abuse, neglect or unauthorized repair or installation. The warranty also will not cover products installed with Non-ADESSO components and product with broken sealed and assembly trace. After replacement of RMA, ADESSO reserves the right to request the total cost of the replacement products with broken seals or assembly trace.

If you discover a defect, Adesso will, at its option, repair or replace the product at no charge to you, provided you return it during the warranty period with transportation charges pre-paid to Adesso. You must contact Adesso at support@adesso.com for a Return Merchandise Authorization number (RMA) prior to returning any product. For each product returned for warranty service, please include your name, shipping address (no P.O. Box), telephone number, copy of the bill of sale as proof of purchase and have the package clearly marked with your RMA number.

SUPPORT

We have listed most of our FAQ's (Frequently Asked Questions) at: <http://www.adesso.com/faqs.asp>. Please visit our FAQ Service & Support pages before you contact our E-mail or Telephone Support.

Email Support: If our FAQ's do not help you resolve your issues, please email support@adesso.com

Telephone Support:
Toll Free: (800) 795-6788
9:00AM to 5:00PM PST Monday - Friday

②

INTRODUCTION

Work freely, with no limits of space, angles or distance. The Adesso Wireless 2.4 GHz RF Wireless iMedia Keyboard combines the control of an integrated touchpad with the features of a standard keyboard all packed into a powerful compact device. With 6500 IDs on 12 channels you can enjoy 30 feet of wireless freedom. The GlidePoint touchpad delivers superior precision and smooth motion once the advance driver installed. It has advance functions such as forward and back, zoom in and out, vertical and horizontal scrolling and touchpad tapping.

FEATURES

- 2.4 GHz RF Wireless Technology
- 12 Interchangeable channels with 65000 IDs per channel.
- 30 feet working range makes a 360-degree connectivity
- GlidePoint touchpad which eliminates use of a mouse
- 12 Multimedia and Internet Hotkeys for easy access.
- Elegant and slim design with a dark piano finish.
- Soft and quiet membrane keys for faster typing
- Fully functional as a full regular keyboard in a compact size

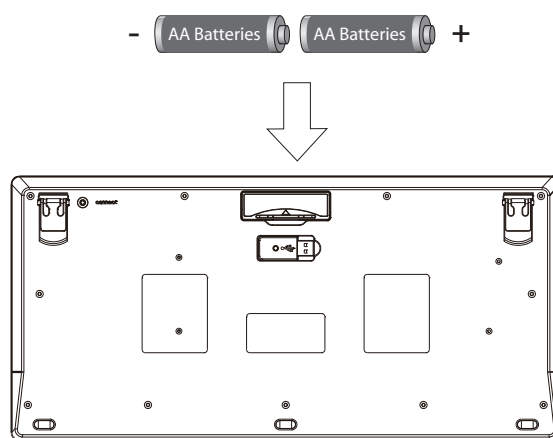
REQUIREMENTS

- Hardware: IBM, Pentium II class compatible or higher
- Operating System: Windows Vista, XP, 2000 and below
- Connection: USB

③

INSTALLATION

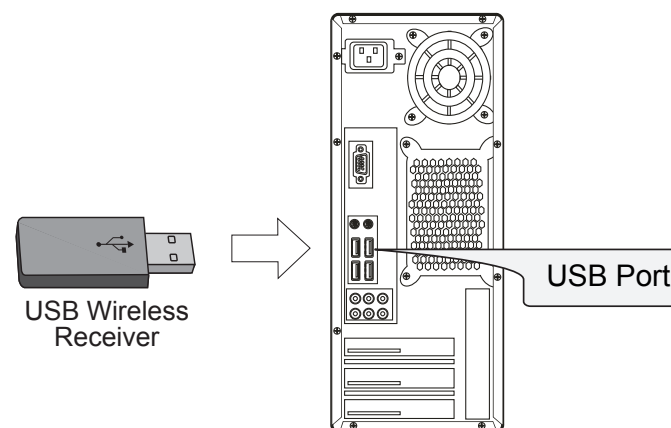
- Place batteries.
 - Open the battery cover under the keyboard and place 2 AA batteries inside.



- Close the battery compartment cover.

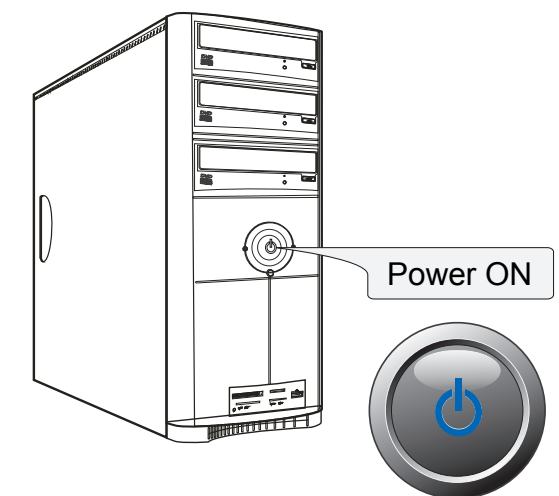
④

- Plug the USB Wireless Receiver of the keyboard into the USB port of your computer. The receiver will be blinking after it is detected by your system.



⑤

- Turn ON your computer and let Windows load completely.



NOTE

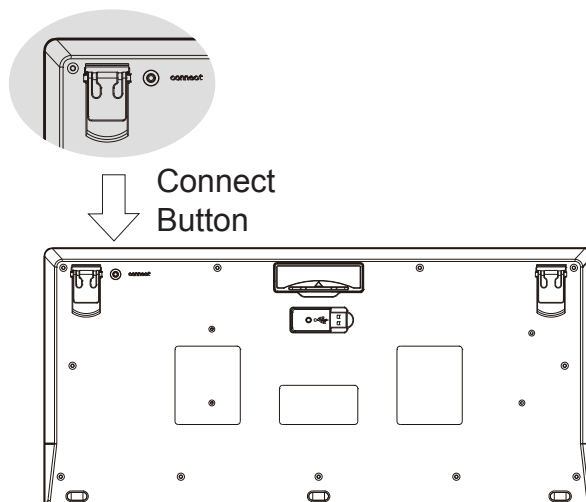
A Windows dialog box New Found Hardware will appear and the system will install the driver automatically and complete the installation.

⑥

- Power the keyboard by switching it "ON". The power switch is found on the left edge of the keyboard. (By default the power of the keyboard is switched "ON".)

PLEASE ADD IMAGE OF OF KEYBOARD SWITCH LOCATION

- Press the "CONNECT" button for 2-3 seconds then release. Connection will be successful once the LED light of the receiver will stop blinking.



⑦

NOTE:

- RF Signal LED on the receiver will flash when the keyboard is being used.
- When the Battery Low LED is ON, it means the keyboard requires to change the batteries.
- The keyboard goes to sleep mode after 5 mins of inactivity but we suggest to turn "OFF" the keyboard when leaving your desk for more than an hour to save battery life and for longer lasting use.

TROUBLESHOOTING

If you cannot get your keyboard to work after installation, please try the following:

- Make sure you have connected the receiver correctly to the computer. The receiver has been properly plugged onto computer's USB ports.
- Make sure you have inserted two AA batteries inside the battery compartment correctly. Move the keyboard closer to the receiver.
- If using more than two units and interference occurs, please reset ID again.
- Wireless phone, routers and other devices that uses 2.4GHz frequency, might cause interference with your keyboard.

⑧

Function Name

Function Description

	My computer	Open the folder of My computer
	Scroll Up	Scrolls up the Windows Folder or browser
	Scroll Down	Scrolls down the Windows folder or browser
	Home	Launches the default Internet browser.
	E-mail	Goes to your Outlook email program
	Forward	Moves to the next page of the browser
	Backward	Moves from the previous page of the browser
	Search	Opens the window search program
	Sleep	Puts the computer to sleep mode
	Play/Pause	Plays/Pauses your video or audio media.
	Stop	Stops the audio/video file currently being played.
	Previous Track	Plays the music track before the current record
	Next Track	Plays the music track after the current record
	Volume Up	Increases the volume of the current audio.
	Volume Down	Decreases the volume of the current audio.
	Mute	Mute & Un-Mute the audio.

⑨